

skandiform

scandinavian sense



New 2017 collection

With this year's new pieces we are presenting four examples of how talented designers create furniture that brings to mind the perfection of nature: a forest, a rolling landscape, a beautiful resting place and last, but not least; silence.

Phaze

by Karim Rashid

Deep Forest

by Nina Jobs

deciBel

by Ruud Ekstrand

Isa

by Louise Hederström





Phaze

by

KARIM RASHID

An armchair that embraces you,
providing generous personal space.
Several linked together create a
beautiful, undulating shape.

*"I was thinking of a design that embraces my
philosophy of sensual minimalism and repetition.
The Phaze armchair was the result!"*

/ Karim Rashid

Soft, inviting design on
a fixed or swivel base



Deep Forest

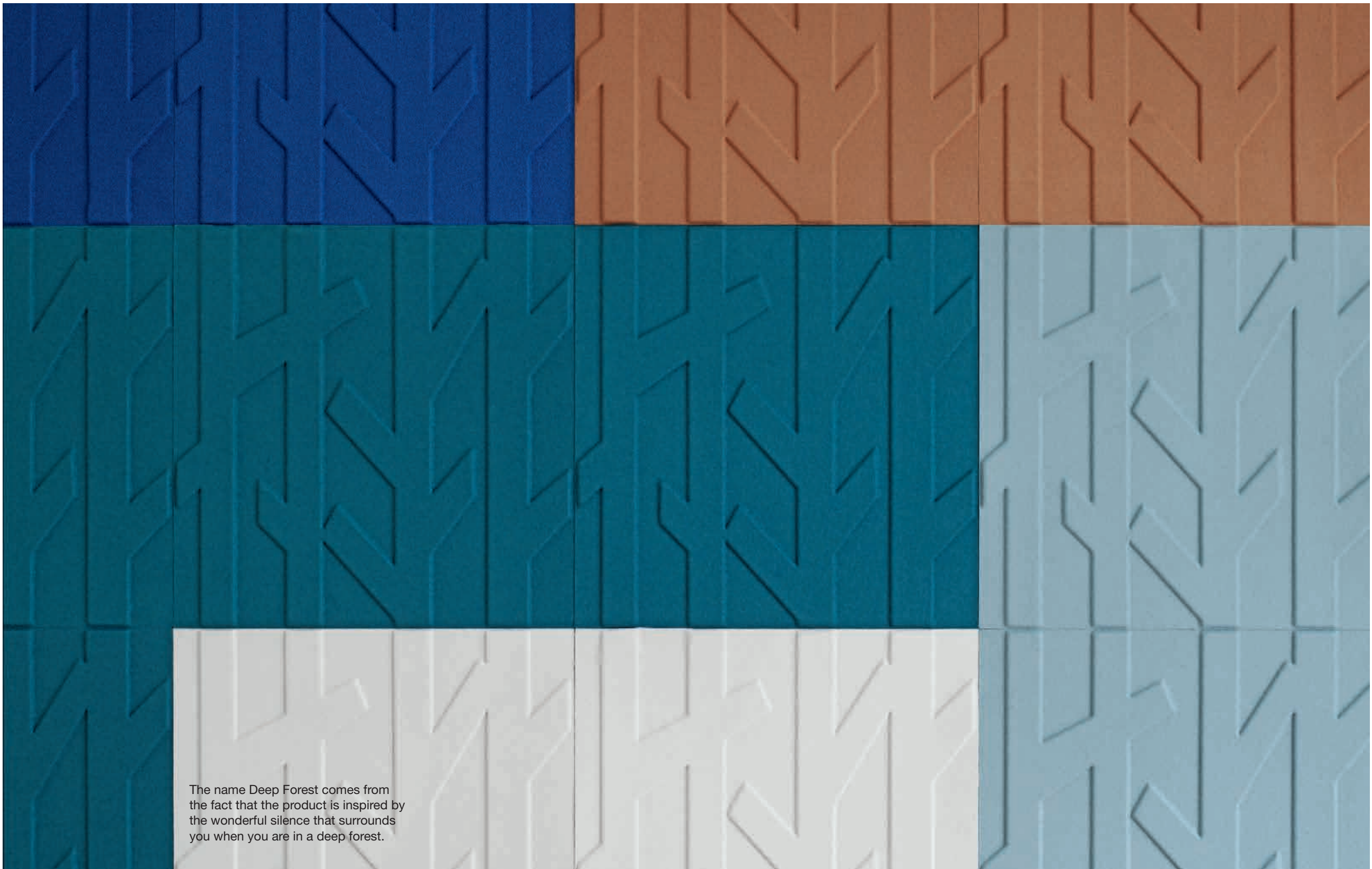
by
NINA JOBS

An effective sound absorber that is easy to place and has a filling made from recycled textiles. The discreet design is a conscious interpretation of the saying that you can't see the wood for the trees – it is meant to blend into the background of the room rather than being the headline act.

“The repeat forest motif has been designed to reflect Skandiform’s aura and create a functional background in public spaces.”

/ Nina Jobs





The name Deep Forest comes from the fact that the product is inspired by the wonderful silence that surrounds you when you are in a deep forest.



deciBel

by
RUUD EKSTRAND

Wood combined with sound-absorbent material results in a comfortable chair that contributes to an equally comfortable environment with no unnecessarily distracting noise.

“The greatest possible silence... sometimes an unusually silent classic is precisely what you need.”

/ Ruud Ekstrand

DeciBel is easy to link together with a stable, stylish aluminium connector.



Isa

by
LOUISE HEDERSTRÖM

Isa is a generously-sized piece of seating furniture that brings to mind a rolling landscape with variations in both height and shape. It's a meeting place to sit down and take a break on.

"The name Isa comes from isarithm, the curved contour lines used on topographical maps to indicate varying heights. I often draw inspiration from nature – it's the ultimate combination of beauty and function."

/ Louise Hederström





The small table works as both a support and a side table.

Our designers

Our various families of timeless furniture are developed in close partnership with our hand-picked team of talented designers and architects.

Louise Hederström

Product: Isa

Louise Hederström's designs span a wide area, covering everything from interior details to furniture and rugs. Her creations often contain elements of her characteristic playfulness as well as nature, from which she draws inspiration. Louise has worked in close collaboration with many of Sweden's biggest design companies.

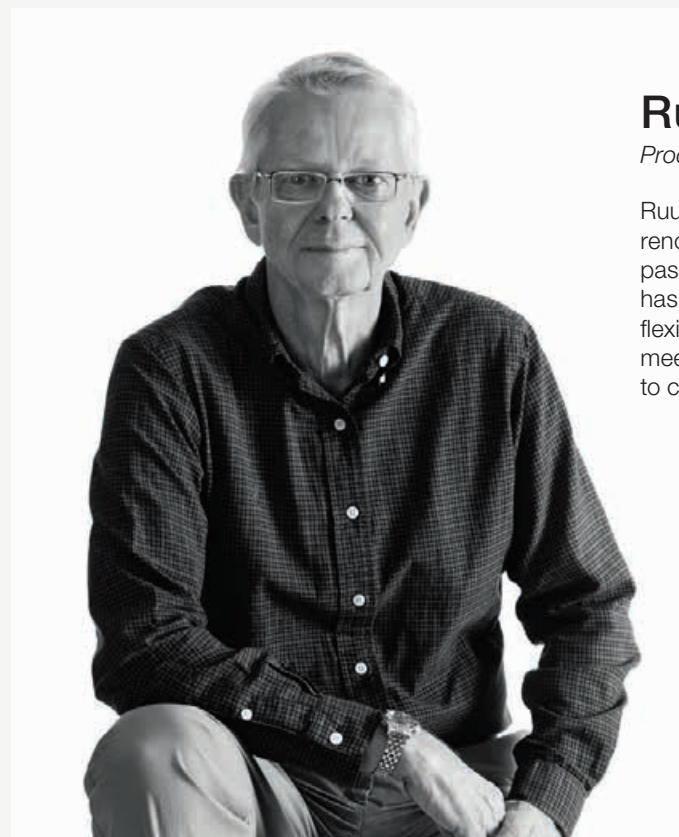


NEW DESIGNER
2017

Karim Rashid

Product: Phaze

Karim Rashid is one of today's most influential designers with more than 3,000 products in production – including 300 award-winners – in 40 different countries. Karim bases his designs on the idea of reflecting society – how we live and what we are looking for. Through frequent flirtations with other media, such as music, art and fashion, he pushes both his own boundaries and those of the world around him.



Ruud Ekstrand

Product: deciBel

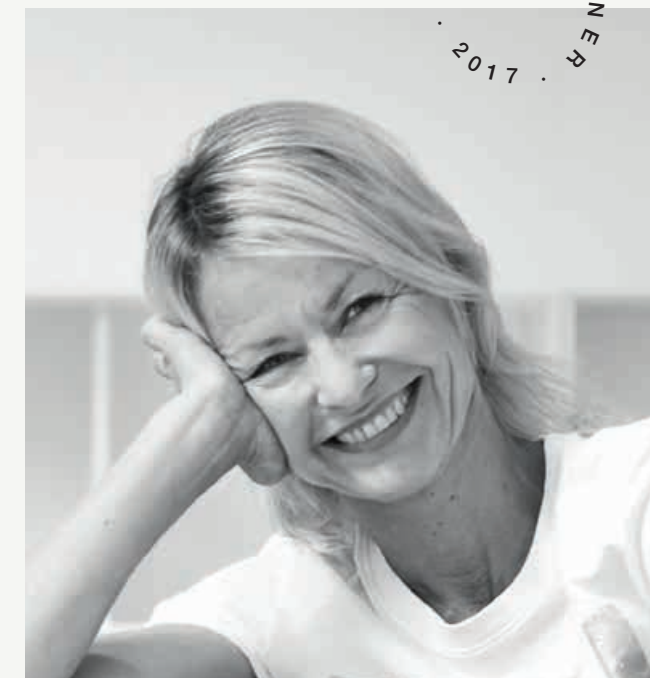
Ruud Ekstrand is one of Sweden's most renowned designers and has always been passionate about public spaces. Ruud has a unique feel for smart, functional and flexible solutions and has made countless meeting rooms into nicer places in which to come together.

NEW DESIGNER
2017

Nina Jobs

Product: Deep Forest

Nina Jobs is an internationally distinguished designer whose creations include everything from small interior details to wallpaper, fashion and furniture. Nina has many other talents too and is also known as a furniture designer, art director and curator of several exhibitions on Swedish design.



We create our furniture in Vinslöv in northeastern Skåne, Sweden. Timeless furniture, focusing on form and function. Superior craftsmanship, for when people meet in a variety of environments. Sustainable series, developed with carefully selected designers and in harmony with nature. We call it Scandinavian Sense.

skandiform
scandinavian sense

Box 36, SE-288 21 Vinslöv, Sweden Tel: +46 (0)44-855 50 Fax: +46 (0)44-855 55 info@skandiform.se

Showrooms: Stockholm Designstop Nackagatan 6, Stockholm
Studio L6 Lasarettsgatan 6, Göteborg
Skøyen Designcenter Drammensveien 130 C1, Oslo

skandiform.com