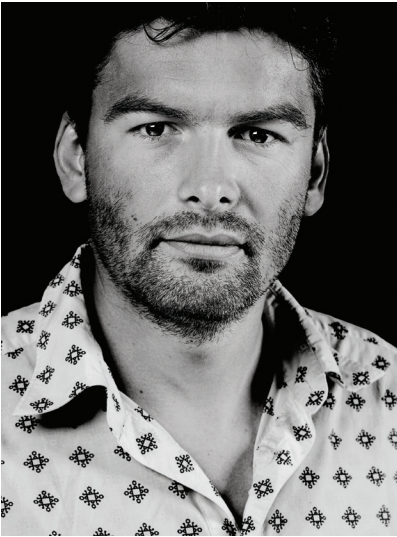


skandiform

DELI - THOMAS PEDERSEN



Thomas Pedersen graduated from Aarhus School of Architecture in Denmark in 2002 and set up the SPARK design studio later the same year. For some years he then worked as a designer, producer and shopkeeper before deciding in 2011 to devote himself wholeheartedly to his design activities.

Thomas Pedersen's designs display typically Danish characteristics, with a clear emphasis on simplicity. He combines classic organic lines with innovative ideas and details. Much of his fascination for furniture design derives from the fact that it is possible to build full-scale models of the concepts he has in his head. He is firmly convinced that it is only by doing this that it is possible to test the qualities of his products with his own body, to assess their durability and thus make certain that the results live up to expectations.

Among Thomas's role models in this context are Charles and Ray Eames, whose furniture design work was always dedicated to ergonomically and comfortably accommodating the human body.

Over the years Thomas Pedersen has won a number of awards for his designs. He is best known for his StingRay chair, which he designed as his graduation project in Aarhus.



"The idea behind Deli has been to create an attractive stackable chair with an organically formed seat shell, the design and comfort of which invites users to linger a little longer. The organic form of the human body is an important source of inspiration for many of my furniture designs, and Deli is no exception."

The underlying concept on which the idea is based is that the upholstered section – the integrated seat and lumbar cushion – provides good support when the user is sitting at a table, leaning forward to eat or work. The plastic seat shell, which holds the upholstered section in an organic embrace, supports the back and offers somewhere for users to rest their arms for a more relaxed sitting posture.